





# 30102C



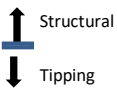
## 30102 C LOAD CHART A-Frame: Main Boom and Jib

Lifting Capacities 4- Seccion Boom 30 ft-100 ft.  
Jib 26 ft- 46 ft.

 22.3 ft. (100%)

 372° Non-continuous

MAIN BOOM LMI CODE 1																
	30.5 ft		42 ft (A)		52 ft (B)		62 ft (C)		72 ft (D)		82 ft (E)		92 ft (F)		102 ft (G)	
	Loaded Boom Angle (deg)	Load Capacity (lbs.)	Loaded Boom Angle (deg)	Load Capacity (lbs.)	Loaded Boom Angle (deg)	Load Capacity (lbs.)	Loaded Boom Angle (deg)	Load Capacity (lbs.)	Loaded Boom Angle (deg)	Load Capacity (lbs.)	Loaded Boom Angle (deg)	Load Capacity (lbs.)	Loaded Boom Angle (deg)	Load Capacity (lbs.)	Loaded Boom Angle (deg)	Load Capacity (lbs.)
5	77	60.000														
8	71	38.600														
10	67	33.600	73	25.000	77	25.000										
12	62	29.620	71	25.000	75	25.000	78	25.000								
15	55	25.510	66	23.570	71	22.450	75	21.640	78	19.660	80	16.460				
20	42	20.200	58	18.740	65	17.730	70	17.340	74	16.760	76	14.330	79	12.180	80	10.300
25	24	15.980	50	15.770	59	14.910	65	14.220	69	13.670	73	12.570	75	10.870	77	9.390
30			39	13.220	52	12.620	60	12.020	65	11.510	69	11.100	72	9.590	74	8.500
35			26	10.380	44	10.630	54	10.360	60	9.910	65	9.530	69	8.500	71	7.630
40					35	8.220	48	8.360	55	8.460	61	8.530	66	7.790	68	6.840
45					23	6.500	41	6.650	50	6.750	57	6.810	62	6.860	65	5.920
50							33	5.370	45	5.470	52	5.540	58	5.580	62	5.190
55							22	4.380	38	4.480	47	4.540	54	4.590	58	4.570
60									31	3.690	42	3.750	49	3.800	55	3.840
65									20	3.030	36	3.110	45	3.160	51	3.190
70											28	2.570	40	2.620	47	2.660
75											20	2.110	34	2.160	43	2.200
80													28	1.770	38	1.810
85													19	1.430	33	1.470
90															27	1.180
95															18	910
DEDUCTIONS FROM MAIN BOOM CAPACITIES FOR STOWED JIB-FJ=Fixed Jib TJ=Telescopico Jib																
	FJ	TJ	FJ	TJ	FJ	TJ	FJ	TJ	FJ	TJ	FJ	TJ	FJ	TJ	FJ	TJ
	500 lbs.	740 lbs.	360 lbs.	540 lbs.	290 lbs.	440 lbs.	250 lbs.	370 lbs.	210 lbs.	320 lbs.	190 lbs.	280 lbs.	170 lbs.	250 lbs.	150 lbs.	220 lbs.



**NOTES:**

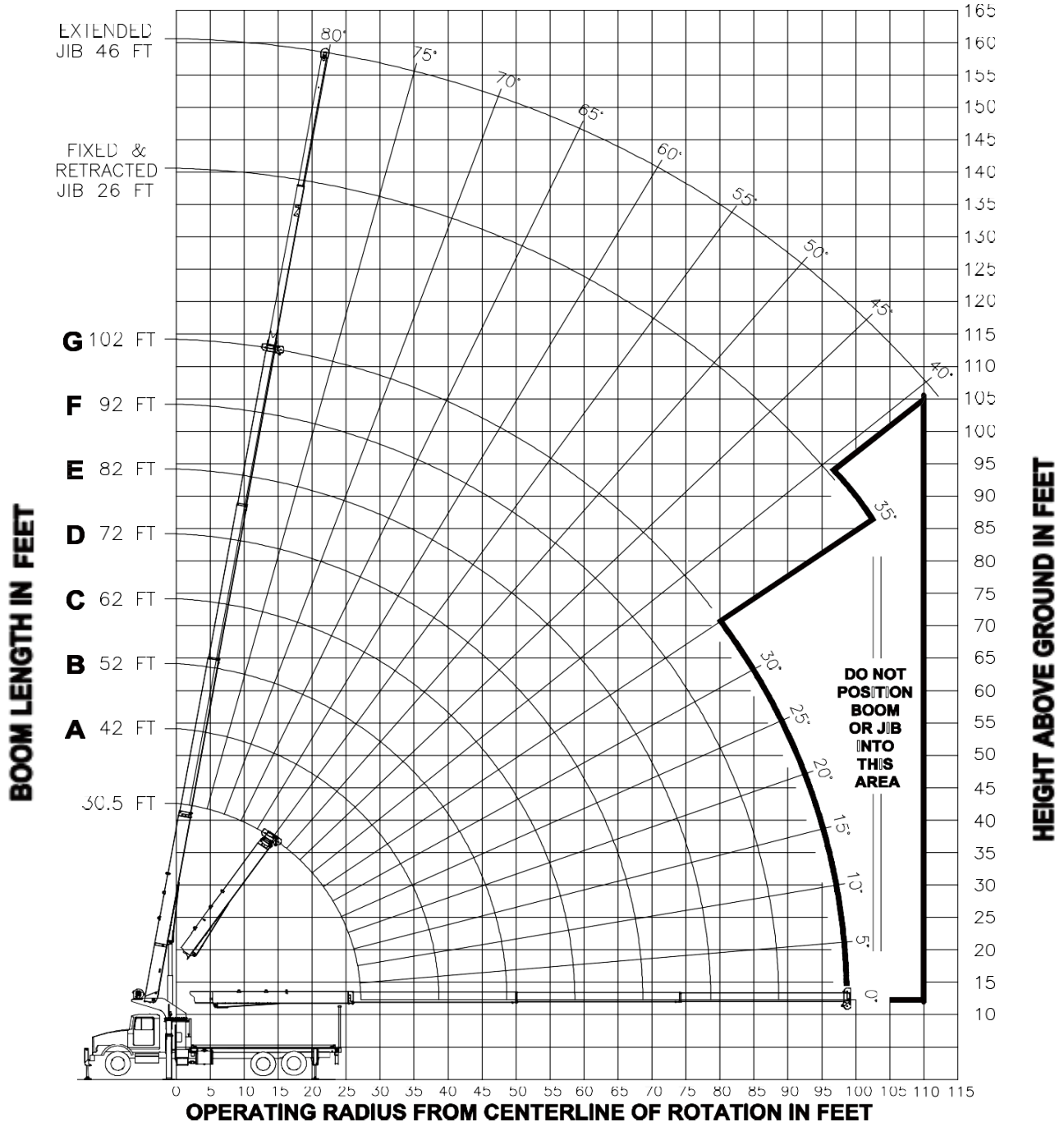
- All loads rated at 360° pick
- Loads based on crane fully extended outriggers and stabilizers
- All "on outriggers" are based on 85% tipping
- Loads above heavy line based on structural rating
- Loads below heavy line are based on tipping rating

JIB LOAD CAPACITIES						
	26 ft. Fixed Jib		26 ft. Tele Jib		46 ft. Tele Jib	
	Loaded Boom Angle (deg)	Load Capacity (lbs.) Code 2	Loaded Boom Angle (deg)	Load Capacity (lbs.) Code 3	Loaded Boom Angle (deg)	Load Capacity (lbs.) Code 4
25	80	5.300	80	5.100		
30	78	5.300	78	5.100	80	3.050
35	76	4.990	76	4.730	78	3.050
40	74	4.580	74	4.310	77	3.050
45	72	4.200	72	3.920	75	3.050
50	69	3.850	69	3.560	73	3.050
55	67	3.530	67	3.240	71	2.890
60	64	3.240	64	2.940	69	2.660
65	62	2.920	62	2.560	67	2.440
70	59	2.570	59	2.220	65	2.440
75	56	2.280	56	1.930	63	2.060
80	53	1.960	53	1.660	60	1.850
85	50	1.620	50	1.320	58	1.630
90	47	1.320	47	1.020	55	1.430
95	44	1.060	44	760	53	1.240
100	40	820	40	520	50	1.000
105	36	610			47	790
110					44	600



## DIAGRAMA DE LA PLUMA 30102-C

Unidades en pies



CONTACTENOS:

VENTAS

acientes@maquinariaucha.com

55 58 72 68 52

SERVICIO

55 58 72 68 77

REFACCIONES

www.maquinariaucha.com